

Przekroje poprzeczne

Skala 1:100/100



Pracownia Projektowa PROJBUD Jarosław Matuszak
88-100 Inowrocław, ul. Poznańska 36
tel. 52 353 24 77 e-mail: biuro@projbud-inowroclaw.pl
www.projbud-inowroclaw.pl
NIP 556-146-87-72 REGON 091367072

Obiekt	Rozbudowa ul. Ogrodowej w Ciechocinku od budynków Wspólnoty ul. Słowackiego		
Tytuł opracowania	PRZEKROJE POPRZECZNE		
Projektant: (Branża drogowa)	mgr inż. Jarosław Matuszak KUP/0128/POOD/08 uprawnienia budowlane do projektowania bez ograniczeń w specjalności drogowej	Podpis:	
Sprawdzający: (Branża drogowa)	mgr inż. Andrzej Piasecki KUP/0117/PWÓD/11 uprawnienia budowlane do projektowania bez ograniczeń w specjalności drogowej	Podpis:	
Faza:	PROJEKT BUDOWLANY	Data:	08.2017
Skala:	1:100/1:100	Nr rysunku:	D-5

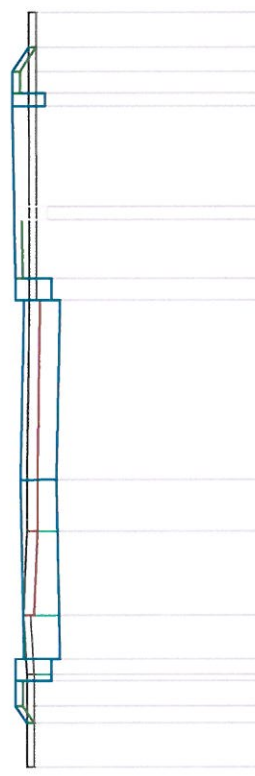
P.P. = 41,00

[illegible]

[illegible]

Pik = 0+040,00
Skala 1:100/100

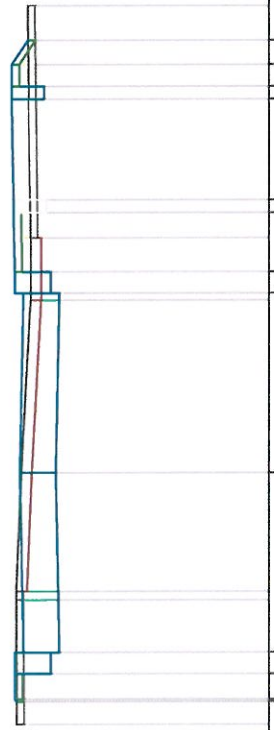
P.P. = 41,00



ODLEGŁOŚCI	RZĘDNE TEREN	RZĘDNE KONS.	RZĘDNE PROJ.
-4,00	44,22	43,88	44,22
-3,32	44,22	43,88	44,22
-3,15	44,22	43,88	44,22
-2,80	44,22	43,88	44,22
-2,71	44,22	43,88	44,22
-2,50	44,22	43,88	44,22
-1,89	44,27	43,76	44,20
-0,72	44,22		
0,00	44,22	43,81	44,31
2,50	44,19	43,76	44,36
2,80		43,88	44,38
3,62		43,95	44,40
3,80		44,15	44,40
5,20		44,17	44,42
5,38		43,97	44,42
6,02			44,20
6,50	44,20		44,20

Pik = 0+060,00
Skala 1:100/100

P.P. = 41,00

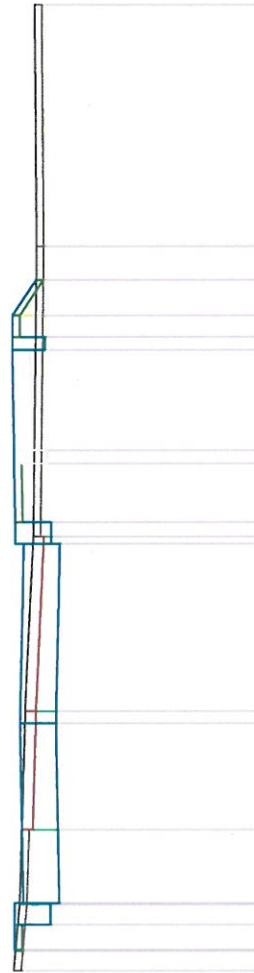


ODLEGŁOŚCI	44,50	44,51	44,52	44,53	44,54	44,55	44,56	44,57	44,58	44,59	44,60	44,61	44,62	44,63	44,64	44,65	44,66	44,67	44,68	44,69	44,70	44,71	44,72	44,73	44,74	44,75	44,76	44,77	44,78	44,79	44,80	44,81	44,82	44,83	44,84	44,85	44,86	44,87	44,88	44,89	44,90	44,91	44,92	44,93	44,94	44,95	44,96	44,97	44,98	44,99	45,00
RZĘDNE TEREN	44,50	44,51	44,52	44,53	44,54	44,55	44,56	44,57	44,58	44,59	44,60	44,61	44,62	44,63	44,64	44,65	44,66	44,67	44,68	44,69	44,70	44,71	44,72	44,73	44,74	44,75	44,76	44,77	44,78	44,79	44,80	44,81	44,82	44,83	44,84	44,85	44,86	44,87	44,88	44,89	44,90	44,91	44,92	44,93	44,94	44,95	44,96	44,97	44,98	44,99	45,00
RZĘDNE KONS.	44,50	44,51	44,52	44,53	44,54	44,55	44,56	44,57	44,58	44,59	44,60	44,61	44,62	44,63	44,64	44,65	44,66	44,67	44,68	44,69	44,70	44,71	44,72	44,73	44,74	44,75	44,76	44,77	44,78	44,79	44,80	44,81	44,82	44,83	44,84	44,85	44,86	44,87	44,88	44,89	44,90	44,91	44,92	44,93	44,94	44,95	44,96	44,97	44,98	44,99	45,00
RZĘDNE PROJ.	44,50	44,51	44,52	44,53	44,54	44,55	44,56	44,57	44,58	44,59	44,60	44,61	44,62	44,63	44,64	44,65	44,66	44,67	44,68	44,69	44,70	44,71	44,72	44,73	44,74	44,75	44,76	44,77	44,78	44,79	44,80	44,81	44,82	44,83	44,84	44,85	44,86	44,87	44,88	44,89	44,90	44,91	44,92	44,93	44,94	44,95	44,96	44,97	44,98	44,99	45,00

[illegible]

Pik = 0+095,00
Skala 1:100/100

P.P. = 41,00



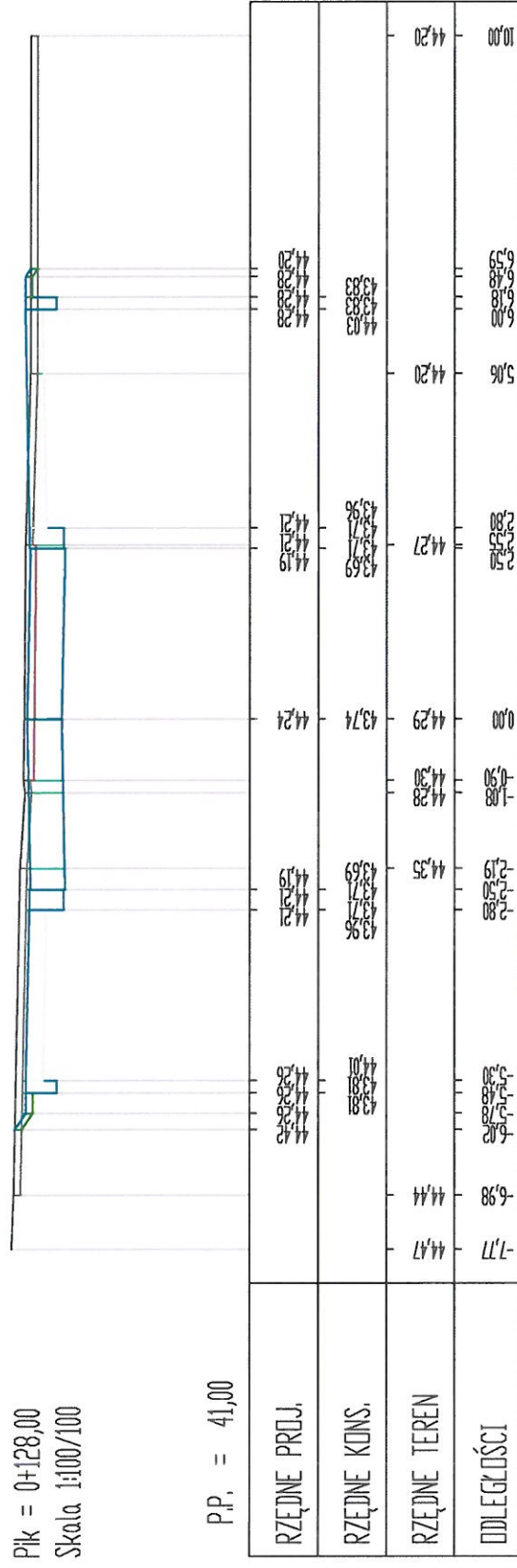
ODLEGŁOŚCI	RZĘDNE TEREN	RZĘDNE KONS.	RZĘDNE PROJ.
3.44	44.45	43.94	44.43
3.17	44.37	43.82	44.32
2.90	44.34	43.80	44.30
2.63	44.30	43.77	44.27
2.36	44.27	43.74	44.24
2.09	44.24	43.71	44.21
1.82	44.21	43.68	44.18
1.55	44.18	43.65	44.15
1.28	44.15	43.62	44.12
1.01	44.12	43.59	44.09
0.74	44.09	43.56	44.06
0.47	44.06	43.53	44.03
0.20	44.03	43.50	44.00
-0.07	44.00	43.47	43.97
-0.34	43.97	43.44	43.94
-0.61	43.94	43.41	43.91
-0.88	43.91	43.38	43.88
-1.15	43.88	43.35	43.85
-1.42	43.85	43.32	43.82
-1.69	43.82	43.29	43.79
-1.96	43.79	43.26	43.76
-2.23	43.76	43.23	43.73
-2.50	43.73	43.20	43.70
-2.77	43.70	43.17	43.67
-3.04	43.67	43.14	43.64
-3.31	43.64	43.11	43.61
-3.58	43.61	43.08	43.58
-3.85	43.58	43.05	43.55
-4.12	43.55	43.02	43.52
-4.39	43.52	42.99	43.49
-4.66	43.49	42.96	43.46
-4.93	43.46	42.93	43.43
-5.20	43.43	42.90	43.40
-5.47	43.40	42.87	43.37
-5.74	43.37	42.84	43.34
-6.01	43.34	42.81	43.31
-6.28	43.31	42.78	43.28
-6.55	43.28	42.75	43.25
-6.82	43.25	42.72	43.22
-7.09	43.22	42.69	43.19
-7.36	43.19	42.66	43.16
-7.63	43.16	42.63	43.13
-7.90	43.13	42.60	43.10
-8.17	43.10	42.57	43.07
-8.44	43.07	42.54	43.04
-8.71	43.04	42.51	43.01
-8.98	43.01	42.48	42.98
-9.25	42.98	42.45	42.95
-9.52	42.95	42.42	42.92
-9.79	42.92	42.39	42.89
-10.06	42.89	42.36	42.86
-10.33	42.86	42.33	42.83
-10.60	42.83	42.30	42.80
-10.87	42.80	42.27	42.77
-11.14	42.77	42.24	42.74
-11.41	42.74	42.21	42.71
-11.68	42.71	42.18	42.68
-11.95	42.68	42.15	42.65
-12.22	42.65	42.12	42.62
-12.49	42.62	42.09	42.59
-12.76	42.59	42.06	42.56
-13.03	42.56	42.03	42.53
-13.30	42.53	42.00	42.50
-13.57	42.50	41.97	42.47
-13.84	42.47	41.94	42.44
-14.11	42.44	41.91	42.41
-14.38	42.41	41.88	42.38
-14.65	42.38	41.85	42.35
-14.92	42.35	41.82	42.32
-15.19	42.32	41.79	42.29
-15.46	42.29	41.76	42.26
-15.73	42.26	41.73	42.23
-16.00	42.23	41.70	42.20
-16.27	42.20	41.67	42.17
-16.54	42.17	41.64	42.14
-16.81	42.14	41.61	42.11
-17.08	42.11	41.58	42.08
-17.35	42.08	41.55	42.05
-17.62	42.05	41.52	42.02
-17.89	42.02	41.49	41.99
-18.16	41.99	41.46	41.96
-18.43	41.96	41.43	41.93
-18.70	41.93	41.40	41.90
-18.97	41.90	41.37	41.87
-19.24	41.87	41.34	41.84
-19.51	41.84	41.31	41.81
-19.78	41.81	41.28	41.78
-20.05	41.78	41.25	41.75
-20.32	41.75	41.22	41.72
-20.59	41.72	41.19	41.69
-20.86	41.69	41.16	41.66
-21.13	41.66	41.13	41.63
-21.40	41.63	41.10	41.60
-21.67	41.60	41.07	41.57
-21.94	41.57	41.04	41.54
-22.21	41.54	41.01	41.51
-22.48	41.51	40.98	41.48
-22.75	41.48	40.95	41.45
-23.02	41.45	40.92	41.42
-23.29	41.42	40.89	41.39
-23.56	41.39	40.86	41.36
-23.83	41.36	40.83	41.33
-24.10	41.33	40.80	41.30
-24.37	41.30	40.77	41.27
-24.64	41.27	40.74	41.24
-24.91	41.24	40.71	41.21
-25.18	41.21	40.68	41.18
-25.45	41.18	40.65	41.15
-25.72	41.15	40.62	41.12
-25.99	41.12	40.59	41.09
-26.26	41.09	40.56	41.06
-26.53	41.06	40.53	41.03
-26.80	41.03	40.50	41.00
-27.07	41.00	40.47	40.97
-27.34	40.97	40.44	40.94
-27.61	40.94	40.41	40.91
-27.88	40.91	40.38	40.88
-28.15	40.88	40.35	40.85
-28.42	40.85	40.32	40.82
-28.69	40.82	40.29	40.79
-28.96	40.79	40.26	40.76
-29.23	40.76	40.23	40.73
-29.50	40.73	40.20	40.70
-29.77	40.70	40.17	40.67
-30.04	40.67	40.14	40.64
-30.31	40.64	40.11	40.61
-30.58	40.61	40.08	40.58
-30.85	40.58	40.05	40.55
-31.12	40.55	40.02	40.52
-31.39	40.52	39.99	40.49
-31.66	40.49	39.96	40.46
-31.93	40.46	39.93	40.43
-32.20	40.43	39.90	40.40
-32.47	40.40	39.87	40.37
-32.74	40.37	39.84	40.34
-33.01	40.34	39.81	40.31
-33.28	40.31	39.78	40.28
-33.55	40.28	39.75	40.25
-33.82	40.25	39.72	40.22
-34.09	40.22	39.69	40.19
-34.36	40.19	39.66	40.16
-34.63	40.16	39.63	40.13
-34.90	40.13	39.60	40.10
-35.17	40.10	39.57	40.07
-35.44	40.07	39.54	40.04
-35.71	40.04	39.51	40.01
-35.98	40.01	39.48	39.98
-36.25	39.98	39.45	39.95
-36.52	39.95	39.42	39.92
-36.79	39.92	39.39	39.89
-37.06	39.89	39.36	39.86
-37.33	39.86	39.33	39.83
-37.60	39.83	39.30	39.80
-37.87	39.80	39.27	39.77
-38.14	39.77	39.24	39.74
-38.41	39.74	39.21	39.71
-38.68	39.71	39.18	39.68
-38.95	39.68	39.15	39.65
-39.22	39.65	39.12	39.62
-39.49	39.62	39.09	39.59
-39.76	39.59	39.06	39.56
-40.03	39.56	39.03	39.53
-40.30	39.53	39.00	39.50
-40.57	39.50	38.97	39.47
-40.84	39.47	38.94	39.44
-41.11	39.44	38.91	39.41
-41.38	39.41	38.88	39.38
-41.65	39.38	38.85	39.35
-41.92	39.35	38.82	39.32
-42.19	39.32	38.79	39.29
-42.46	39.29	38.76	39.26
-42.73	39.26	38.73	39.23
-43.00	39.23	38.70	39.20
-43.27	39.20	38.67	39.17
-43.54	39.17	38.64	39.14
-43.81	39.14	38.61	39.11
-44.08	39.11	38.58	39.08
-44.35	39.08	38.55	39.05
-44.62	39.05	38.52	39.02
-44.89	39.02	38.49	38.99
-45.16	38.99	38.46	38.96
-45.43	38.96	38.43	38.93
-45.70	38.93	38.40	38.90
-45.97	38.90	38.37	38.87
-46.24	38.87	38.34	38.84
-46.51	38.84	38.31	38.81
-46.78	38.81	38.28	38.78
-47.05	38.78	38.25	38.75
-47.32	38.75	38.22	38.72
-47.59	38.72	38.19	38.69
-47.86	38.69	38.16	38.66
-48.13	38.66	38.13	38.63
-48.40	38.63	38.10	38.60
-48.67	38.60	38.07	38.57
-48.94	38.57	38.04	38.54
-49.21	38.54	38.01	38.51
-49.48	38.51	37.98	38.48
-49.75	38.48	37.95	38.45
-50.02	38.45	37.92	38.42
-50.29	38.42	37.89	38.39
-50.56	38.39	37.86	38.36
-50.83	38.36	37.83	38.33
-51.10	38.33	37.80	38.30
-51.37	38.30	37.77	38.27
-51.64	38.27	37.74	38.24
-51.91	38.24	37.71	38.21
-52.18	38.21	37.68	38.18
-52.45	38.18	37.65	38.15
-52.72	38.15	37.62	38.12
-52.99	38.12	37.59	38.09
-53.26	38.09	37.56	38.06
-53.53	38.06	37.53	38.03
-53.80	38.03	37.50	38.00
-54.07	38.00	37.47	37.97
-54.34	37.97	37.44	37.94
-54.61	37.94	37.41	37.91
-54.88	37.91	37.38	37.88
-55.15	37.88	37.35	37.85
-55.42	37.85	37.32	37.82
-55.69	37.82	37.29	37.79
-55.96	37.79	37.26	37.76
-56.23	37.76	37.23	37.73
-56.50	37.73	37.20	37.70
-56.77	37.70	37.17	37.67
-57.04	37.67	37.14	37.64
-57.31	37.64	37.11	37.61
-57.58	37.61	37.08	37.58
-57.85	37.58	37.05	37.55
-58.12	37.55	37.02	37.52
-58.39	37.52	36.99	37.49
-58.66	37.49	36.96	37.46
-58.93	37.46	36.93	37.43
-59.20	37.43	36.90	37.40
-59.47	37.40	36.87	37.37
-59.74	37.37	36.84	37.34
-60.01	37.34	36.81	37.31
-60.28	37.31	36.78	37.28
-60.55	37.28	36.75	37.25
-60.82	37.25	36.72	37.22
-61.09	37.22	36.69	37.19
-61.36	37.19	36.66	37.16
-61.63	37.16	36.63	37.13
-61.90	37.13	36.60	37.10
-62.17	37.10	36.57	37.07
-62.44	37.07	36.54	37.04
-62.71	37.04	36.51	37.01
-62.98	37.01	36.48	36.98
-63.25	36.98	36.45	36.95
-63.52	36.95	36.42	36.92
-63.79	36.92	36.39	36.89
-64.06	36.89	36.36	36.86
-64.33	36.86	36.33	36.83
-64.60	36.83	36.30	36.80
-64.87	36.80	36.27	36.77
-65.14	36.77	36.24	36.74
-65.41	36.74	36.21	36.71
-65.68	36.71	36.18	36.68
-65.95	36.68	36.15	36.65
-66.22	36.65	36.12	36.62
-66.49	36.62	36.09	36.59
-66.76	36.59	36.06	36.56
-67.03	36.56	36.03	36.53
-67.30	36.53	36.00	36.50
-67.57			

Technical drawing of a mechanical part, likely a shaft or rod, showing a cross-section with a central hole and a flange. The drawing includes dimension lines and a scale bar.

$$P.P. = 41,00$$
[illegible]

Pik = 0+128,00
Skala 1:100/100

P.P. = 41,00



[illegible]

ODLEGŁOŚCI	-10,00	=	-9,89	-	-8,50	-4,91	0,00	0,64	44,23	44,31	44,24	7,55	8,50	9,43	10,00
RZĘDNE TEREN	44,42	=	44,42	-	43,90	44,36	44,31	44,31	44,23	44,23	44,23	44,23	44,23	44,23	44,23
RZĘDNE KOINS.				-	43,81		43,81		43,73						
RZĘDNE PROJ.				-	44,40		44,31		44,23						

ODLEGŁOŚCI	-10,00	=	-9,89	-	-8,50	-4,91	0,00	0,64	44,23	44,31	44,24	7,55	8,50	9,43	10,00
RZĘDNE TEREN	44,42	=	44,42	-	43,90	44,36	44,31	44,31	44,23	44,23	44,23	44,23	44,23	44,23	44,23
RZĘDNE KOINS.				-	43,81		43,81		43,73						
RZĘDNE PROJ.				-	44,40		44,31		44,23						